

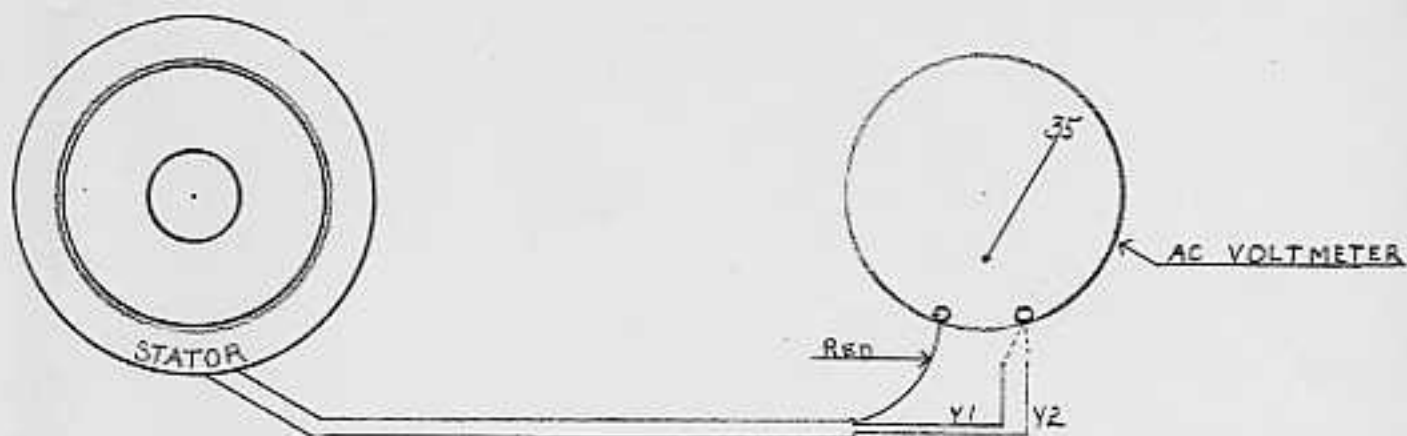
### Alternator Test

1. Disconnect at the regulator the 2 yellow and 1 red wires from the stator and separate cables so they do not touch.
2. Start engine and rev to 6000 R.P.M. Use an AC voltmeter and take a reading between each yellow and the red wire. Meter should indicate approximately 35 volts. If the readings on the yellow wires are about the same but less than 35 volts, the magnets should be recharged. If the readings are not equal, the continuity of these cables must be checked as illustrated by the attached diagram. From the red wire to ground, no readings should be noted. A reading should be noted between the red and each yellow wire. If infinity reading is noted, coils are shorted and must be replaced.

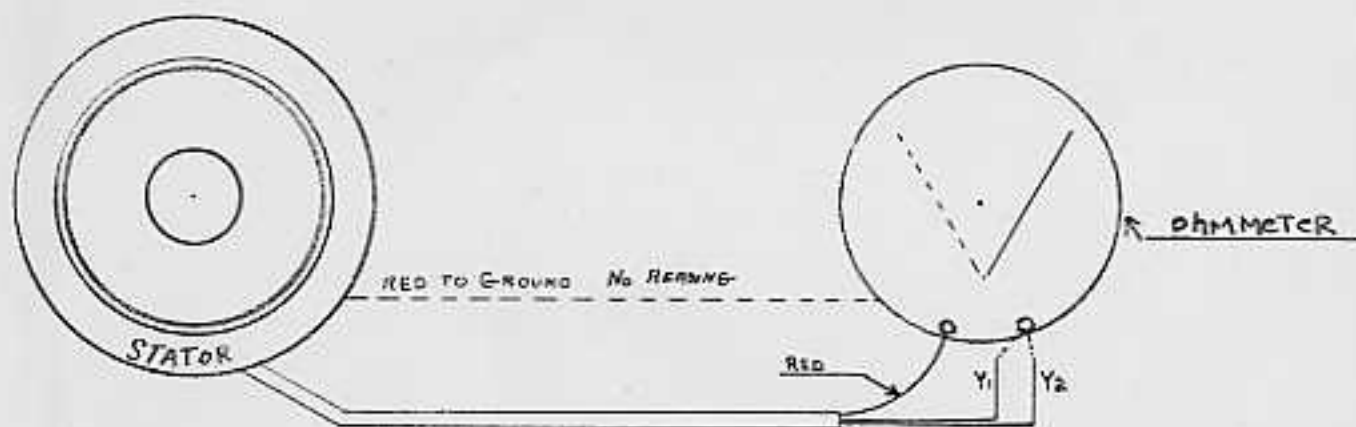
### Regulator Test

1. By using 1 cell of an additional battery and connected as noted in attached diagram, with switch in "A" position, ammeter should read between 1 and 10 amps dependent on battery condition.
2. With switch in position "B", total battery voltage is increased to 8V and ammeter must read zero. If ammeter shows a charge, replace regulator and retest.

Note! When checking with all wires disconnected, no ohm readings should be noted between any terminals. The only reading is between brown and ground which is about 25 ohm's.



YELLOW #1 AND #2 SHOULD READ EQUAL



Y1 - Y2 TO RED RESISTANCE READING (NOT INFINITE)

# Regulator Test

